

# THAILAND



Population: 67 010 502 • Income group: Middle • Gross national income per capita: US\$ 5 340

INSTITUTIONAL FRAMEWORK	
Lead agency	National Road Safety Directing Center
Funded in national budget	Yes
National road safety strategy	Yes
Funding to implement strategy	Partially funded
Fatality reduction target	Less than 10 deaths per 100 000 population (2010–2020)

SAFER ROADS AND MOBILITY	
Formal audits required for new road construction projects	No
Regular inspections of existing road infrastructure	No
Policies to promote walking or cycling	No
Policies to encourage investment in public transport	Yes
Policies to separate road users and protect VRUs	No

SAFER VEHICLES	
Total registered vehicles for 2012	32 476 977
Cars and 4-wheeled light vehicles	11 829 221
Motorized 2- and 3-wheelers	19 169 418
Heavy trucks	901 014
Buses	137 609
Other	439 715
Vehicle standards applied <sup>a</sup>	
Frontal impact standard	No
Electronic stability control	No
Pedestrian protection	Yes

<sup>a</sup> UNECE WP29.

POST-CRASH CARE	
Emergency room injury surveillance system	Yes
Emergency access telephone numbers	1669
Permanently disabled due to road traffic crash	4.6% of admitted patients <sup>b</sup>

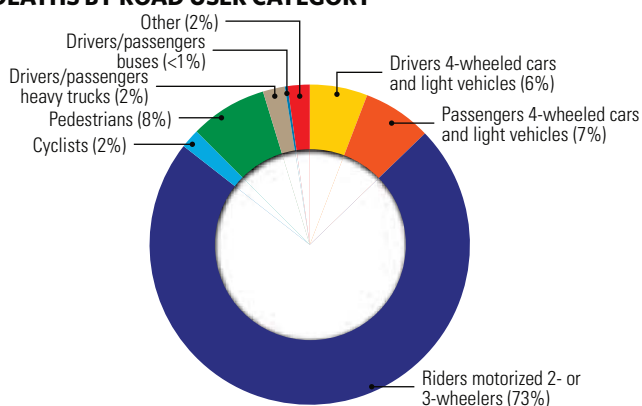
<sup>b</sup> 2006, Study of Dr. Daranee Suwapan, MD. "Incidence of Disability and Impact from Road Traffic Injury".

DATA	
Reported road traffic fatalities (2012)	14 059 <sup>c</sup> (79% M, 21% F)
WHO estimated road traffic fatalities	24 237
WHO estimated rate per 100 000 population	36.2
Estimated GDP lost due to road traffic crashes	3.0% <sup>d</sup>

<sup>c</sup> Bureau of Policy and Strategy, Office of Permanent Secretary, Ministry of Public Health. Defined as unlimited time period following crash.

<sup>d</sup> 2009, Dr. Pichai Thaneerananon, PhD. "Traffic Accident Costing in Thailand 2004".

## DEATHS BY ROAD USER CATEGORY



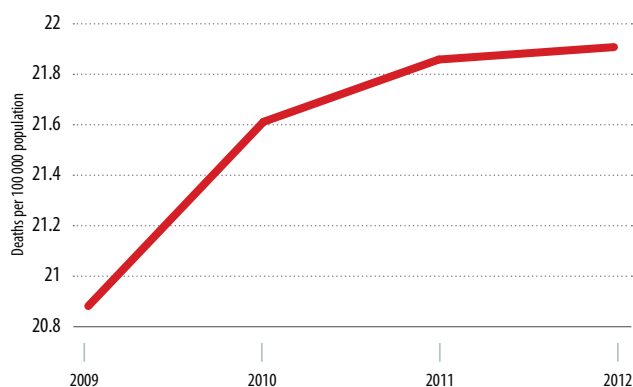
Source: Injury Surveillance System (data from 2012).

SAFER ROAD USERS	
National speed limit law	Yes
Max urban speed limit	80 km/h
Max rural speed limit	90 km/h
Max motorway speed limit	120 km/h
Local authorities can modify limits	No
Enforcement	0 1 2 ③ 4 5 6 7 8 9 10
National drink–driving law	Yes
BAC limit – general population	≤ 0.05 g/dl
BAC limit – young or novice drivers	≤ 0.05 g/dl
Random breath testing carried out	Yes
Enforcement	0 1 2 3 4 5 ⑥ 7 8 9 10
% road traffic deaths involving alcohol	26% <sup>e</sup>
National motorcycle helmet law	Yes
Applies to drivers and passengers	Yes
Law requires helmet to be fastened	Yes
Law refers to helmet standard	Yes
Enforcement	0 1 2 3 4 5 ⑥ 7 8 9 10
Helmet wearing rate	52% Drivers <sup>f</sup> , 20% Passengers <sup>f</sup>
National seat-belt law	Yes
Applies to front and rear seat occupants	No
Enforcement	0 1 2 3 4 5 ⑥ 7 8 9 10
Seat-belt wearing rate	58% Drivers <sup>f</sup> , 54% Front seats <sup>f</sup>
National child restraint law	No
Restrictions on children sitting in front seat	No
Child restraint law based on	—
Enforcement	—
% children using child restraints	—
National law on mobile phone use while driving	Yes
Law prohibits hand-held mobile phone use	Yes
Law also applies to hands-free phones	No
National drug-driving law	Yes

<sup>e</sup> Injury Surveillance System (data from 2012).

<sup>f</sup> Survey of Thai Roads Foundation (data from 2012).

## TRENDS IN REPORTED ROAD TRAFFIC DEATHS



Source: Bureau of Policy and Strategy, Office of Permanent Secretary, Ministry of Public Health.